

InfiMONITOR is a monitoring system controlling health of wireless network, built using equipment produced by InfiNet Wireless. Monitoring system will help you timely respond to changes in wireless network, increase its manageability and scalability.

KEY FEATURES

- ▶ Display of the wireless network structure with metrics about hosts and links in real time on the network map.
- ▶ Creation of diagrams based on different parameters of hosts and links.
- ▶ Automatic tracking of changes and creation of events according to the configured rules.
- ▶ Email-notifications to the responsible employees about critical events.
- ▶ Lists of hosts and links with ability to view values of all parameters.
- ▶ Automatic discovery of hosts and links using WANFlex OS, which provides information on neighboring hosts.

InfiMONITOR monitoring system is supplied as a distributive, designed to deploy in the customer's proprietary infrastructure both on virtual machine and on dedicated server.

Due to high automation level, the system launch will not take a lot of time. Mechanism of automatic discovery of wireless devices will find them and add.

So, you can start to get new data about wireless network health within several minutes after **InfiMONITOR** is installed.

List of events

Status	Severity	N...	Rule	Description	First seen	Last seen	...
New	CRITICAL	XG... Lin...	Link XG2-Slave...		2017-04-20, 03:42:20	2017-04-27, 09:35:19	2168
New	INFO	Un... Fir...	Firmware on ho...		2017-04-26, 12:26:19	2017-04-26, 12:26:19	1
New	INFO	Un... Int...	Operational stat...		2017-04-26, 10:01:19	2017-04-26, 10:01:19	1
New	INFO	Un... Int...	Operational stat...		2017-04-26, 10:01:19	2017-04-26, 10:01:19	1
Aged	INFO	XG... Int...	Operational stat...		2017-04-25, 12:45:57	2017-04-25, 12:45:57	1
Aged	INFO	XG... Int...	Operational stat...		2017-04-25, 12:45:57	2017-04-25, 12:45:57	1
Resolved	NOTICE	XG... CP...	CPU load is on ...		2017-04-25, 12:45:57	2017-04-25, 12:45:57	1
Resolved	CRITICAL	XG... Ho...	Host XG2-Slav...		2017-04-25, 12:45:40	2017-04-25, 12:45:55	4
Aged	INFO	XG... IP...	Interface mgmt ...		2017-04-24, 12:45:19	2017-04-24, 12:45:19	1
Aged	INFO	XG... Fir...	Firmware on ho...		2017-04-24, 12:45:19	2017-04-24, 12:45:19	1
Resolved	CRITICAL	XG... Ho...	Host XG2-Slav...		2017-04-20, 03:42:20	2017-04-24, 12:40:23	1262
Resolved	CRITICAL	Sla... Lin...	Link Slave_2 = ...		2017-04-21, 07:04:26	2017-04-21, 07:08:18	2
Resolved	CRITICAL	Ma... Ho...	Host Master_2 ...		2017-04-21, 07:04:26	2017-04-21, 07:04:26	1
Resolved	NOTICE	Un... CP...	CPU load is on ...		2017-04-20, 10:37:15	2017-04-20, 10:37:15	1
Aged	INFO	Un... Int...	Operational stat...		2017-04-20, 10:27:16	2017-04-20, 10:27:16	1
Resolved	NOTICE	Un... CP...	CPU load is on ...		2017-04-20, 10:22:16	2017-04-20, 10:22:16	1
Aged	INFO	Un... Int...	Operational stat...		2017-04-20, 09:57:16	2017-04-20, 09:57:16	1
Aged	INFO	Un... Int...	Operational stat...		2017-04-20, 09:57:16	2017-04-20, 09:57:16	1
Acknowledged	CRITICAL	XG... Ho...	Host XG1-Mast...		2017-04-19, 06:36:48	2017-04-20, 03:31:44	252
Resolved	CRITICAL	Sla... Lin...	Link Slave_2 = ...		2017-04-19, 06:27:48	2017-04-19, 08:37:40	74
Resolved	CRITICAL	Sla... Ho...	Host Slave_2 st...		2017-04-19, 06:27:48	2017-04-19, 08:36:46	38

Accumulated events

Descrip...	Appearance	Source
Host XG...	2017-04-24, 12:45:19	Poller
Status h...	2017-04-24, 12:45:19	infi-monitor
Host XG...	2017-04-24, 12:40:23	Poller
Host XG...	2017-04-24, 12:35:23	Poller
Host XG...	2017-04-24, 12:30:23	Poller
Host XG...	2017-04-24, 12:25:23	Poller
Host XG...	2017-04-24, 12:20:23	Poller
Host XG...	2017-04-24, 12:15:23	Poller

Event details

Host	
Board temperature, °C	41
CPU Load, %	5
Description	XG WANFlex H12S10v1.6.6 * J 4 2016 18:13:12 * SN:500268
GPS coordinates	56.846164703368
GPS coordinates	60.634540557861
Hardware model	Um/5.500.2x500
Host name	XG2-Slave
Host status	Down
Memory usage, %	27

Affected rule

Hosts data

- ▶ Display of key parameters values for hosts in real time: status, last reboot reason, model, serial number, etc.
- ▶ Detailed information about every host: level of CPU load, RAM memory capacity, current temperature, network parameters, etc.
- ▶ Output of network parameters: list of network interfaces displays parameter value of each interface.

Automatic hosts discovery

- ▶ Automatic discovery and adding of hosts and links from the same MINT network.
- ▶ It is sufficient to manually add just one host from every network.

Links data

- ▶ Display of key parameters values for links in real time: status, bitrate, retries level, errors level, etc.
- ▶ Ability to view detailed information about down and up streams of every link: signal level, load, distance, etc.

Graphs

- ▶ Creation of graphs with different parameters for hosts and links within arbitrary period of time.
- ▶ Long-term previous periods data storage.
- ▶ Ability to output statistical data in a data table.

Events

- ▶ Display of events in the feed with severity and object, for which the event was created.
- ▶ The same type events aggregation with number of retries.
- ▶ Manageable event statuses.
- ▶ Flexible configuration of rules for creating events.
- ▶ Ability to assign individual rules for creating events for different hosts groups.
- ▶ Notifications for the responsible employees about events via email with ability to create a text message and configure minimum severity for triggering the notification.
- ▶ Automatic closing of events, if their reason is not relevant anymore or the event is outdated.

List of links

Link name	Type	Status	MCS	RX Load, pps	RX Load...	Tags
TestDevice-931061 ⇄ TestDevice-931065	MINT	Up	QPSK 1/2 / QPSK 1/2	20 / 15	150 / 95	-
TestDevice-931061 ⇄ TestDevice-931063	PRF	Up	QPSK 1/2 / QPSK 1/2	6 / 3	50 / 18	-
TestDevice-931027 ⇄ TestDevice-931069	MINT	Up	QPSK 1/2 / QPSK 1/2	1 / 9	25 / 73	-
TestDevice-931063 ⇄ TestDevice-931064	PRF	Up	QPSK 1/2 / QPSK 1/2	0 / 0	0 / 0	-
TestDevice-940013 ⇄ TestDevice-940014	XG	Up	16QAM 1/2 / 16QAM 3/4	0 / 0	0 / 0	-
TestDevice-940015 ⇄ TestDevice-940016	XG	Up	16QAM 1/2 / 16QAM 3/4	0 / 0	0 / 0	-
TestDevice-940018 ⇄ TestDevice-940017	XG	Up	16QAM 3/4 / 16QAM 1/2	0 / 0	0 / 0	-
XG2-Slave ⇄ XG1-Master	XG	Up	64QAM 4/6 / 256QAM 5/8	0 / 0	0 / 0	-
Slave_2 ⇄ Master_2	MINT	Up	64QAM 5/6 / 64QAM 5/6	4 / 8	6 / 17	-

▼ Link properties: TestDevice-931061 ⇄ TestDevice-931065

Parameter	Value
Link Tx power, dBm	0.0 / 0.0
Link distance, km	0.0
Link load, %	0.0 / 0.0
Link status	UP
Link type	MINT

▼ Host properties: TestDevice-931061

General IP-addresses rf5.0 prf0 eth0 lo0

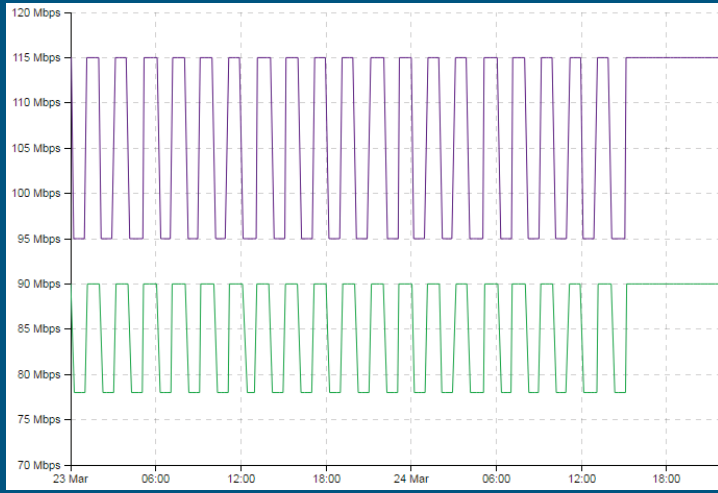
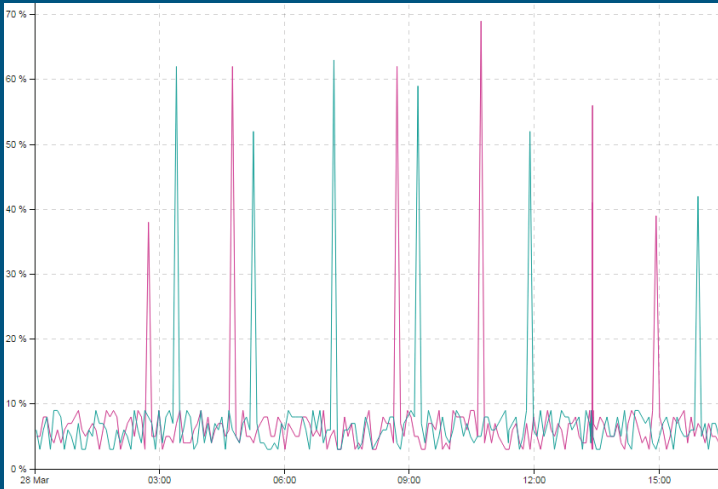
Parameter	Value
Serial number	931061
Software version	SNMP simulator v1.0.1
System location	-
Total memory, MB	0

▼ Host properties: TestDevice-931065

General IP-addresses rf5.0 prf0 eth0 lo0

Parameter	Value
Software version	SNMP simulator v1.0.1
System location	-
Total memory, MB	0
Uptime	00:45:57

Graphs



Host data

▼ Host properties: TestDevice-931062

Parameter	Value
Board temperature, °C	0
CPU Load, %	5
Description	Simulated R5000 device * ...
GPS coordinates	-
Hardware model	-
Host name	TestDevice-931062
Host status	UP
Reboot reason	-
Serial number	931062
Software version	SNMP simulator v1.0.1
System location	-

▼ Network properties: TestDevice-931062

IP-addresses Links rf5.0 prf0 eth0 lo0

Parameter	Value
Admin Status	UP
IPv4 address	1.65.3.56
Interface Rx load, kbps	0
Interface Rx total packets	0
Interface Tx load, kbps	0
Interface Tx total packets	0
Interface name	eth0
MAC address	01:50:53:5F:56:1A
Oper Status	UP

Network map

- ▶ Logical map for displaying network structure.
- ▶ Geographical map for displaying network structure with connection to hosts according to actual location coordinates.
- ▶ Display of hosts using graphic markers, showing current host status, maximum severity among all pending events, as well as their number. All changes are displayed on the map in real time.
- ▶ Ability to view parameter values of hosts and links in the network map mode.

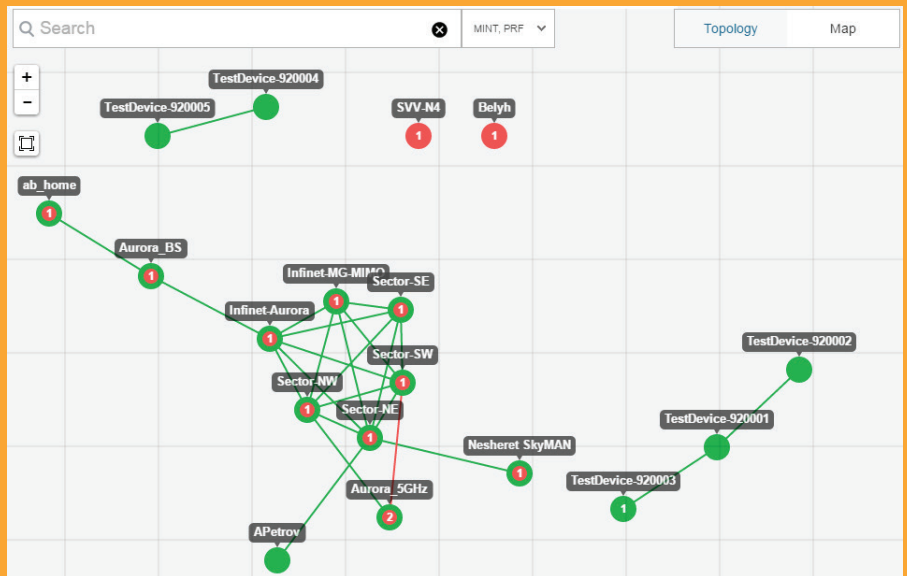
Install and support

- ▶ The product is supplied as an ISO image.
- ▶ The product is installed automatically using specialized installation software.
- ▶ The following virtualization systems are supported: Oracle VM VirtualBox, VMware ESXi, Microsoft Hyper-V, Citrix XenServer.
- ▶ InfiMONITOR is updated automatically via network.

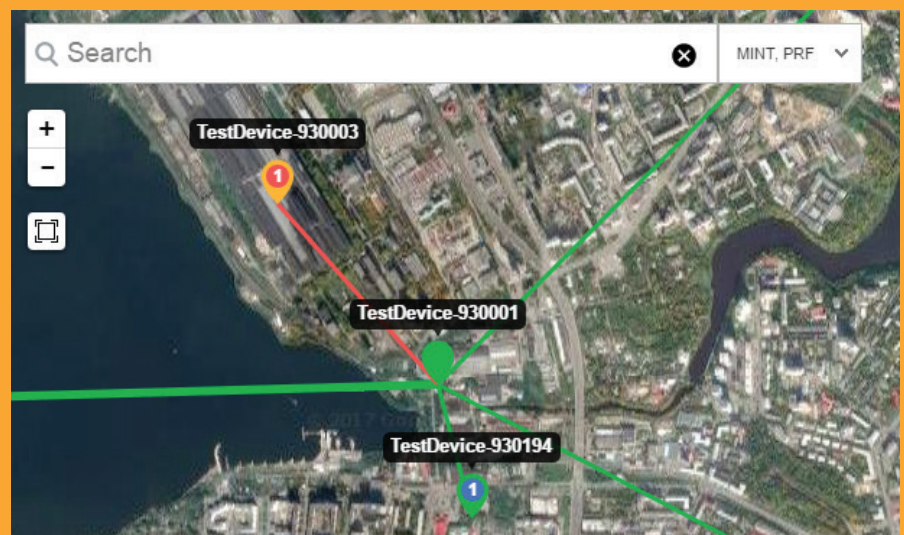
Minimal system requirements

- ▶ CPU Intel Core i3 3 GHz, x64 architecture.
- ▶ RAM 4 Gb.
- ▶ HDD: 200 Gb free storage space.

Logical network map



Geographical network map



List of event rules

Rule name	Description	Severity
Interface down	This rule will fire events when interface operationa...	INFO
Link down	This rule will fire events when link changes status...	CRITICAL
Retries appeared	This rule will fire events when there is noticeable r...	WARNING
Firmware upgrade	This rule notifies about firmware upgrades.	INFO
IP address changed	This rule notifies about IP address changes.	INFO
System temperature critical level	This rule will fire events when device board tempe...	NOTICE
CPU load critical level	This rule will fire events when device CPU load ex...	NOTICE
MAC address changed	This rule notifies about MAC address changes.	INFO
Errors appeared	This rule will fire events when errors are observe...	WARNING